



KINETIC

RACK AND PINION DRIVE

KINETIC DRIVE SYSTEM

The Kinetic Drive System, designed as an innovative rack and pinion drive motor, provides a smooth, quiet, and reliable operation for automated gates. The Kinetic operator is a key component of Wallace Perimeter Security's Alpha and Delta Cantilever Gate Systems.

Standard features include a powerful DC motor, battery backup, and inherent entrapment sensor. When installed with an Alpha Gate, the entire system is UL 325 listed and ASTM F2200 compliant.

- Robust components; shielded from power surges
- Soft-start and Soft-stop technology
- Two speeds available; 1 or 2 ft/per second travel velocity
- Entrapment sensors
- UPS battery backup ensures a fully-functioning gate when AC power is unavailable
- Powder-coated steel cabinet
- Solar powered option
- Easy to install

115 Lawson Crescent
Winnipeg, Manitoba, Canada R3P 1A6
Phone: 866.300.1110

wallaceperimetersecurity.com



KINETIC

RACK AND PINION DRIVE

TECHNICAL SPECIFICATIONS

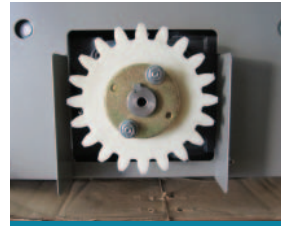
- Components are protected by opto-isolators, shielding them from power surges
- UPS backup ensures a fully-functioning gate in the event of an AC power failure
- USB communications port; direct access to system configuration and diagnostics
- Inherent entrapment sensor; per UL 325 safety standards
- Independent adjustment for open and close speeds
- Programmable Smart DC board allows full control over behavior of gate and all hard-wired peripherals
- Configurable relay outputs for access control integration
- Requires minimal mechanical maintenance
- 32-character LCD; increased readability
- UL 325/CSA listed

STANDARD FEATURES

- 1 foot/second travel velocity
- Variable-speed control assures smooth gate movement
- Free diagnostic software turns your laptop into an on-site troubleshooting tool

OPTIONS (ADDITIONAL CHARGES APPLY)

- Photo cells
- Solar options available
- Intelligent vehicle detectors
- Warning lights, traffic signals



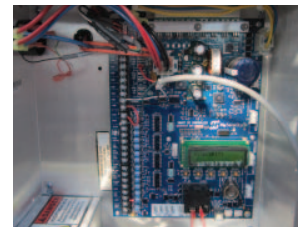
PINION DRIVE GEAR



HEAVY DUTY CHASSIS



BATTERY BACKUP



PROGRAMMABLE OPERATOR

MODEL	KINETIC 1	KINETIC 2
Max Gate Weight	1,500 lb. (682 kg)	1,000 lb. (455 kg)
Max Gate Length	40 ft. (12 m)	40 ft. (12m)
Rate of Travel	0.75 to 1.25 ft/s (23 to 38 cm/s)	1.75 to 2.25 ft/s (53 to 69 cm/s)
Duty Cycle	Continuous	Continuous
Temp. Rating	-13F to 158 F (-25 C to 70 C)***	-13F to 158 F (-25 C to 70 C)***
Voltage Input	115V/3A or 230V/1.5A, 50/60 Hz	115V/3A or 230V/1.5A, 50/60 Hz
Accessory Power	12VDC and 24VDC and 24VAC 1 A each	12VDC and 24VDC and 24VAC 1 A each
Communication	USB, RS-232, RS-485	USB, RS-232, RS-485
UL 325 Listing	Usage Class I, II, III, IV*	Usage Class III, IV**
Warranty	5 year (7 year single family residential)	5 year

*Speed settings cannot exceed 1ft/s for Class I and II usage.

**Not for residential use or applications intended to serve the general public.

***Optional heater/Thermal cover extends operating range to -49 F / -45 C

Kinetic Operator is exceptionally energy efficient, however actual battery backed up gate travel will depend on gate resistance to travel, cycle length, battery longevity, ambient temperature, accessories drawing battery power and frequency of gate cycles during power outage.

115 Lawson Crescent
Winnipeg, Manitoba, Canada R3P 1A6
Phone: 866.300.1110

wallaceperimetersecurity.com


WALLACE
PERIMETER SECURITY